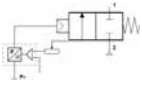


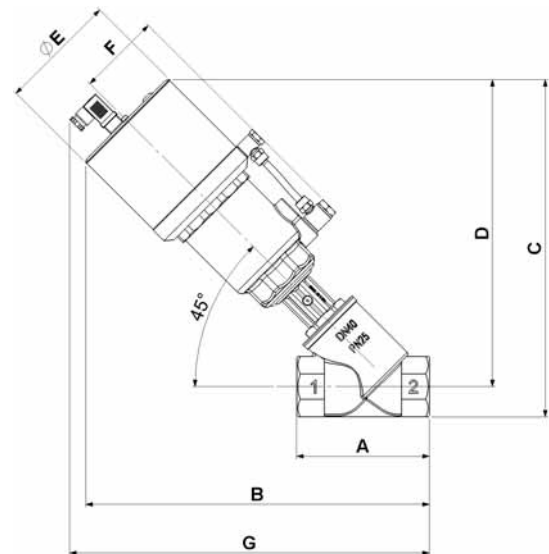
## CONTROL PISTON ACTUATED VALVE WITH INTEGRATED POSITIONER DN15 UP TO DN50; STAINLESS STEEL



**TYPE: PROPORTIONAL NC**

### TECHNICAL SPECIFICATIONS

Media: water, oil, aggressive media and steam
Media temperature: -10°C ÷ +140°C (2,6 barg for steam)
High temperature version up to 180°C available
Low friction stem seal (not available for HT version)
Ambient temperature: -10°C ÷ +60°C
Set point signal: 0 ÷ 10V ; 4 ÷ 20mA
Electrical supply: 24V dc
Flow characteristics: linear or equal percentage
Protection class: IP65
Integrated self-starter (self-adjusted valve)
Pilot media: dry and filtered air mesh (25 µm)
Body material: cast AISI 316L (see page 36)
Bonnet material: cast AISI 316L (see page 36)
Actuator size: Ø 63 - 90
Actuator body material: Polyamide PA6 (reinforced fiberglass 30%)
Seal material: PTFE
Positioner enclosure: aluminium
Fail safe position: closed, maintained
Function: NO / NC
Electrical connections: DIN EN 175301-803 form A
Hysteresis: < 1% f.s.
Repeatability: < 0,5% f.s.
Minimum set point: < 2% f.s.



### BENEFITS

- Actuator housing rotation 360°
- Valves DN32÷DN50 complying with 97/23/EC Directive Category I

### OPTIONS

- Bronze body and brass bonnet available
- Connection options: screwed, flanged, butt and socket welding, sanitary clamp
- Seal material: PEEK
- Body and shaped plug with hardening treatment

### DIMENSIONS & WEIGHTS

connection	act. Ø	A	B	C	D	E	F	G	weight
(ISO 228 G)	(mm)	(mm)	(mm)	(mm)	(mm)	(mm)	(mm)	(mm)	(kg)
1/2"	63	65	273	267	253	107	75	288	-
3/4"		75	279	274	258			294	-
1"		90	293	287	267			308	-
1 1/4"		110	306	299	275			321	-
1 1/2"		120	311	307	280			326	-
2"		150	329	322	288			344	-
1"	90	90	295	288	268	107	86	310	-
1 1/4"		110	308	300	275			323	-
1 1/2"		120	313	308	280			328	-
2"		150	332	324	290			347	-

### SELECTION TABLE

connection	DN Ø	act. Ø	pilot pressure		working pressure	flow direction
(ISO 228 G)	(mm)	(mm)	min(bar)	max(bar)	max(bar)	
1/2"	DN15	63	3	8	16	ONLY 2 ÷ 1
3/4"	DN20				16	
1"	DN25				11	
1 1/4"	DN32				6	
1 1/2"	DN40				4	
2"	DN50				2.5	
1"	DN25	90	3.3	8	14	
1 1/4"	DN32				12	
1 1/2"	DN40				8	
2"	DN50				6	

M&M International reserves the right to modify or change the contents or technical specifications without prior warning.